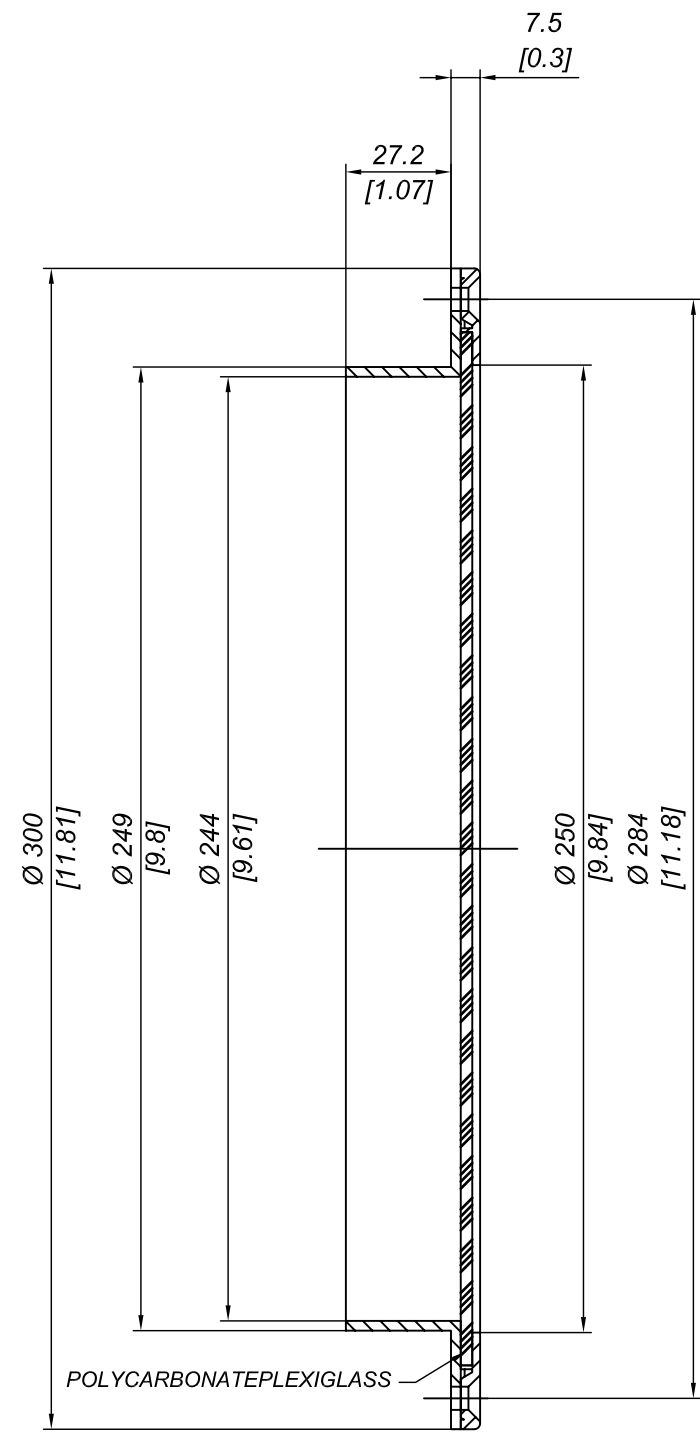
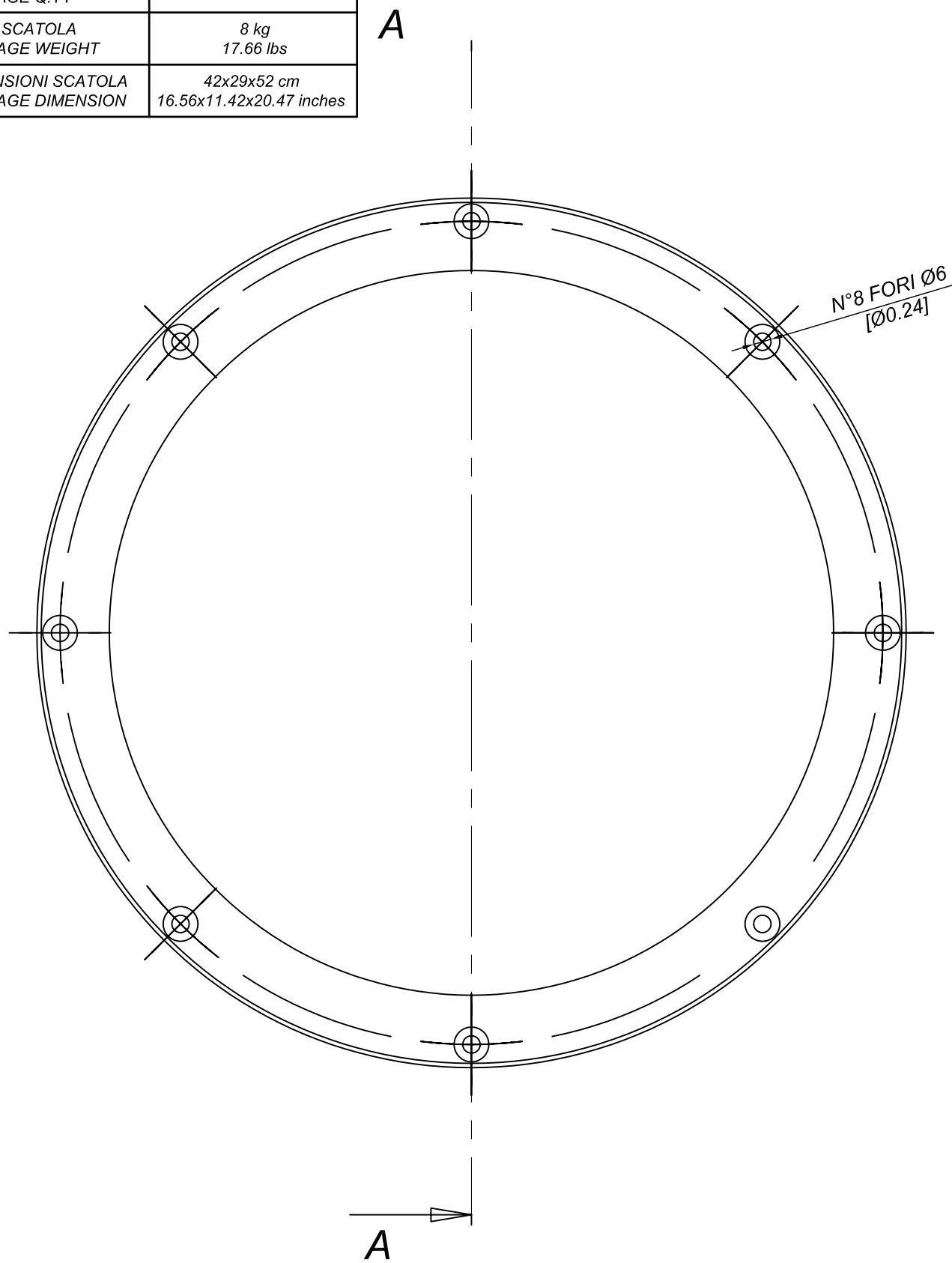
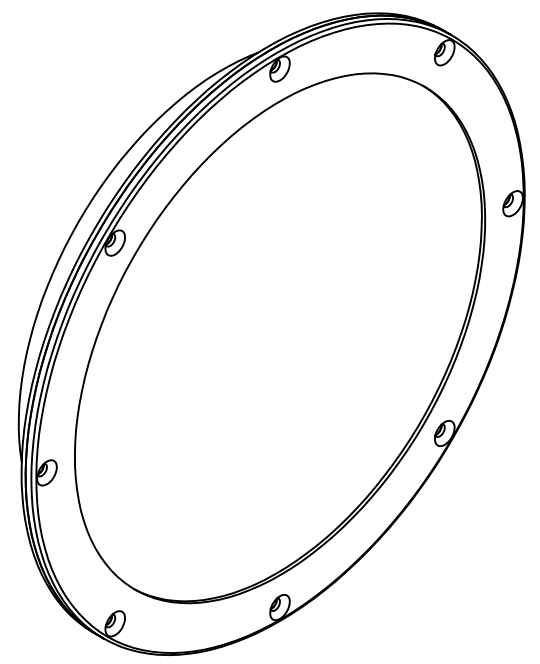


Q.TÀ SCATOLA PACKAGE Q.TY	18
PESO SCATOLA PACKAGE WEIGHT	8 kg 17.66 lbs
DIMENSIONI SCATOLA PACKAGE DIMENSION	42x29x52 cm 16.56x11.42x20.47 inches



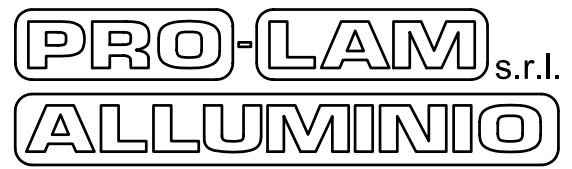
SEZIONE A-A



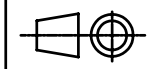
QUESTO OBLO' VIENE ACCOPPIATO CON IL CODICE N 300 PER DETERMINARE UN OBLO' DOPPIO A CANOCCHIALE (25 - 50 mm)

THIS PORTHOLE WORKS WITH THE CODE N300 TO BECOME A DOUBLE ADJUSTABLE PORTHOLE (25 - 50 mm)

DESCRIZIONE OBLO' 25 mm		DESCRIZIONE PORTHOLE 25 mm	
MATERIALE MATERIAL	PA6+30%G.F. + POLYCARBONATE	TRATTAMENTO TREATMENT	--
PESO TEORICO THEORETICAL WEIGHT	-- kg -- lb	NORMA TOLLERANZA STANDARD TOLERANCE	--



SCALA SCALE	1:2	DATA DATE	2009/07/18
CODICE CODE	N301	FORMATO SIZE	A3



Questo disegno è di proprietà riservata alla ditta PRO-LAM ALLUMINIO s.r.l. A termini di legge è assolutamente vietato riprodurre o comunicare a terzi il contenuto del presente disegno. This drawing is a property of PRO-LAM ALLUMINIO s.r.l. This drawing shall not be reproduced or released to others except as otherwise authorized by PRO-LAM ALLUMINIO s.r.l.