

OpenAir™

Air damper actuators

GDB..1E



Electromotive rotary actuator for 2-position, 3-position, and modulating control





- Nominal torque 5 Nm
- Operating voltage AC 24 V ~ / DC 24...48 V =
- Mechanically adjustable span between 0. 90°
- Pre-wired with standard 0.9 m connection cables
- Type-specific variations with adjustable offset and span for the positioning signal
- Position indication: Mechanical and electrical
- Feedback potentiometer
- Self-adaption of the rotation angle range and adjustable auxiliary switches for supplemental functions

Application

Rotary actuators are used in ventilation and air conditioning plants to regulate and shut off air dampers:

- For damper areas up to approximately 0.8 m² (Reference value: Always comply with the damper manufacturer's specifications).
- Suitable for use with 2-position and 3-position controllers as well as modulating controllers (DC 0/2...10 V) to control air dampers.
- We recommend a minimum pulse length of 500 ms on rotary actuators operated with 3-point control to ensure continuous and accurate operation.

Functions

GDB..	AC 24 V ~ / DC 24...48 V –	141.1E / 142.1E / 146.1E	161.1E / 163.1E / 164.1E / 166.1E
	AC 100...240 V ~	341.1E / 346.1E	361.1E
Control type	2-position/3-position		Modulating control (0/2...10 V)
Rotary direction	<p>Clockwise or counterclockwise direction depends...</p> <ul style="list-style-type: none"> • ... on the type of control; • ... on the rotation direction switch: <div style="display: flex; justify-content: space-around; align-items: center;"> <div style="text-align: center;"> <p>CW</p>  </div> <div style="text-align: center;"> <p>CCW</p>  </div> </div> <p>The actuator remains in the respective position with no power applied.</p>		
		<ul style="list-style-type: none"> • ... On the DIL switch setting Clockwise / Counterclockwise <div style="display: flex; justify-content: space-around; align-items: center;"> <div style="text-align: center;"> <p>CW</p>  </div> <div style="text-align: center;"> <p>CCW</p>  </div> </div> <ul style="list-style-type: none"> • ... on the positioning signal. <p>The actuator remains in the deployed position:</p> <ul style="list-style-type: none"> • ... if the positioning signal is maintained at a constant value; • ... in the event of power loss. 	
Position indication	mechanical	Rotation angle position indication using a position indicator.	
	electrical	Connecting the feedback potentiometer to an external voltage source results in voltage supply proportional to the rotation angle.	<p>Position indicator: Output voltage $U = DC\ 0/2...10\ V$ is generated proportional to rotation angle.</p> <p>The direction of action (inverted or non-inverted) for output voltage U is based on the DIL switch position.</p>
Auxiliary switch	The switching points for auxiliary switches A and B can be set mutually independent in 5° increments from 0 to 90°.		
The rotation angle range is self-adapting	-		<p>The actuator automatically determines the mechanical end positions of the rotation angle range.</p> <p>The characteristic function ($U_0, \Delta U$) is mapped to the calculated rotation angle range.</p>
Manual adjustment	The actuator can be manually adjusted by pressing the gear train disengagement button.		
Rotation angle limitation	A set screw can limit the rotary angle to between 0° and 90°.		

Housing

The housing is made of fiberglass reinforced plastic:

- Flame retardant
- Non-brominated
- Non-chlorinated.

Actuator / gears

- Brushless, robust DC motors ensure reliable operation regardless of load. The damper actuators do not require an end position switch, are overload proof, and remain in place upon reaching the end stop.
- The gears are maintenance free and low noise.

Type summary

Type	Stock number	Control	Operating voltage	Positioning signal input Y	Position indicator U = DC 0...10 V =	Feedback potentiometer 5kΩ	Self-adapting Rotational angle area	Auxiliary switch	Rotation switch
GDB141.1E	S55499-D184	2 or 3-position	AC 24 V ~ / DC 24...48 V =	-	-	-	-	-	yes
GDB142.1E	S55499-D185					yes			
GDB146.1E	S55499-D186					-		2	
GDB341.1E	S55499-D187		AC 100...240 V ~			-			
GDB346.1E	S55499-D188					2			
GDB161.1E	S55499-D266	Modulating	AC 24 V ~ / DC 24...48 V =	DC 0/2...10 V =	yes	-	yes	-	yes
GDB163.1E	S55499-D267			DC 0...35 V =					
GDB164.1E	S55499-D268			DC 0/2...10 V =				2	
GDB166.1E	S55499-D269								
GDB361.1E	S55499-D189		AC 100...240 V ~	-					
Nominal torque		5 Nm (applies to all)							

Accessories / spare parts

See data sheet N4698:



<https://sid.siemens.com/v/u/A6V10405972>

Product documentation

Topic	Title	Document ID
Data sheet	Air damper actuators	A6V10636149
Mounting instructions	GDB..1E, GLB..1E	A5W00005997

Related documents such as the environmental declarations, declarations of conformity, etc., can be downloaded from the following Internet address:

www.siemens.com/bt/download

Notes

Safety

CAUTION



National safety regulations

Failure to comply with national safety regulations may result in personal injury and property damage.

- Observe national provisions and comply with the appropriate safety regulations.
- Mounting, commissioning, and service by properly trained personnel only.

Engineering

Auxiliary switch and potentiometer

Cannot be integrated after the fact.

Installation

WARNING



No internal line protection for supply lines to external consumers

Risk of fire and injury due to short-circuits!

- Adapt the wire cross sections as per local regulations to the rated value of the installed fuse.

Maintenance

Actuators GDB..1E are maintenance free.

Disposal



The device is considered an electronics device for disposal in terms of European Directive 2012/19/EU and may not be disposed of as domestic garbage.

- Use only designated channels for disposing the devices.
- Comply with all local and currently applicable laws and regulations.

Supply voltage GDB1..1E			
Operating voltage (SELV/PELV)		AC 24 V ~ ±20 % (19.2...28.8 V ~) DC 24...48 V = ±20 % (19.2...57.6 V =) ¹⁾	
Frequency		50/60 Hz	
Power consumption	Operation	GDB14..1E	1.0 VA / 0.6 W
		GDB16..1E	1.3 VA / 1.0 W
	Hold	GDB14..1E	0.7 VA / 0.4 W
		GDB16..1E	1.0 VA / 0.6 W

Supply voltage GDB3..1E			
Operating voltage (SELV/PELV)		AC 100...240 V ~ ±10 % (90...264 V ~)	
Frequency		50/60 Hz	
Power consumption	Operation	GDB34..1E	5.0 VA / 1.6 W
		GDB36..1E	3.3 VA / 1.2 W
	Hold	GDB34..1E	0.9 W
		GDB36..1E	0.5 W

Operating data	
Nominal torque	5 Nm
Maximum torque (when blocked)	10 Nm
	Minimum holding torque
Nominal angle of rotation (with position indication)	90°
Maximum angle of rotation (mechanically limited)	95° ±2°
Runtime at nominal angle of rotation 90°	150 s
Sound pressure level: Actuator	28 dB(A)

Inputs			
Positioning signal for GDB14..1E			
Operating voltage AC 24 V ~ / DC 24...48 V =	wires 1-6/G-Y1	Clockwise	
	wires 1-7/G-Y2	Counterclockwise	
Positioning signal for GDB34..1E			
Operating voltage AC 100...240 V~	wires 4-6/N-Y1	Clockwise	
	wires 4-7/N-Y2	Counterclockwise	
Positioning signal for GDB16..1E			
Input voltage	wires 8-2/Y-G0	DC 0/2...10 V =	
Power consumption	0.1mA		

Inputs			
	Input resistance	≥100 kΩ	
Max. permissible input voltage		DC 35 V = limited internally to DC 10 V =	
	Protected against incorrect wiring	max. AC 24 V ~ / DC 24...48 =	
Hysteresis	for non-adjustable characteristic function	60 mV	
	for adjustable characteristic function	0.6 % of ΔU	
Adjustable characteristic function (GDB163.1E, GDB164.1E)			
	Adjustable with 2 potentiometers:	Offset U ₀	DC 0...5 V =
		Workspace ΔU	DC 2...30 V =
	Max. input voltage		DC 35 V =
	Protected against incorrect wiring		max. AC 24 V ~ / DC 24...48 V =

Outputs				
Position indicator				
	Output signal GDB16..1E	wires 9-2/U-G0		
	Output signal GDB36..1E	wires 9-2/U-G-		
		Output voltage U		DC 0...10 V =
		Max. output current		DC ±1 mA
		Protected against incorrect wiring		max. AC 24 V ~ / DC 24...48 V =
Aux. power supply (G-/G+)		GDB36..1E	DC 24 V = ±20 %, max. 10 mA	
Feedback potentiometer (for GDB142.1E)				
	Change in resistance	wires P1-P2	0...5000 Ω	
	Load		<0.25 W	
	Max. loop current		<10 mA	
	Permissible voltage at potentiometer (SELV/PELV)		AC 24 V ~ / DC 24...48 V =	
	Insulation resistance between potentiometer and housing		AC 500 V ~	

Mechanical life	
Full cycles	100'000
Partial cycles	5'000'000

Auxiliary switches (GDB146.1E, GDB166.1E, GDB346.1E)		
Switching voltage		AC 24..250 V ~ / DC 12...30 V =
Contact loading		6 A resistive, 2 A inductive, min. 10 mA @ AC 4 A resistive, 2 A inductive, min. 10 mA @ DC 30 V = 0.8 A resistive, 0.5 A inductive, min. 10 mA @ DC 60 V =
Electric strength auxiliary switch against housing		AC 4 kV
Switching range for auxiliary switches		5...90°
	Setting increments	5°
Factory setting	Switch A	5°
	Switch B	85°

Connection cable	
Cable length	0.9 m
Cable cross-section	0.75 mm ²
Permissible length for signal wires	300 m

Safety class and degree of protection		
Protection class		EN 60730
	AC 24 V / DC 24...48, feedback potentiometer	III
	AC 100...240 V, auxiliary switch	II
Degree of protection of housing		IP54 per EN 60529

Environmental conditions		
Operation		IEC 60721-3-3
	Climatic conditions	Class 3K5
	Mounting location	Interior, weather-protected
	Temperature (extended)	-32...55 °C
	Humidity, non-condensing	<95 % r.h.
Transportation		IEC 60721-3-2
	Climatic conditions	Class 2K3
	Temperature (extended)	-32...70 °C
	Humidity, non-condensing	<95 % r.h.
Storage		IEC 60721-3-1
	Climatic conditions	Class 1K3
	Temperature (extended)	-32...50 °C
	Humidity, non-condensing	<95 % r.h.
Mechanical conditions		Class 2M2

Standards, directives and approvals	
Product standards	EN 60730 Part 2-14: Particular requirements for electric actuators
Electromagnetic compatibility (field of use)	For residential, commercial, and industrial environments
EU conformity (CE)	A5W00003842 ²⁾
UK conformity (UKCA)	A5W00198029A ²⁾
RCM Conformity	A5W00003843 ²⁾
EAC compliance	Eurasian conformity
UL certification	UL per UL 60730 http://ul.com/database cUL as per CSA-C22.2 No. 24-93

Environmental compatibility
Environmental Declaration A5W00026066 ²⁾ contains data on environmental-compatible product design and assessment (RoHS compliance, compositions, packaging, environmental benefits and disposal).

Dimensions and weight		
Actuator (W x H x D)		See Dimensions [▶ 11]
Damper shaft	Round	8...16 mm
	Round with insert	8...10 mm
	Square	8...12.8 mm
	Hexagonal	8...14 mm 15 mm ³⁾
	Min. length	20 mm
	Max. shaft hardness	<300 AV
Weight (excluding packaging)	Without switch	Max. 0.49 kg
	With switch	Max. 0.63 kg

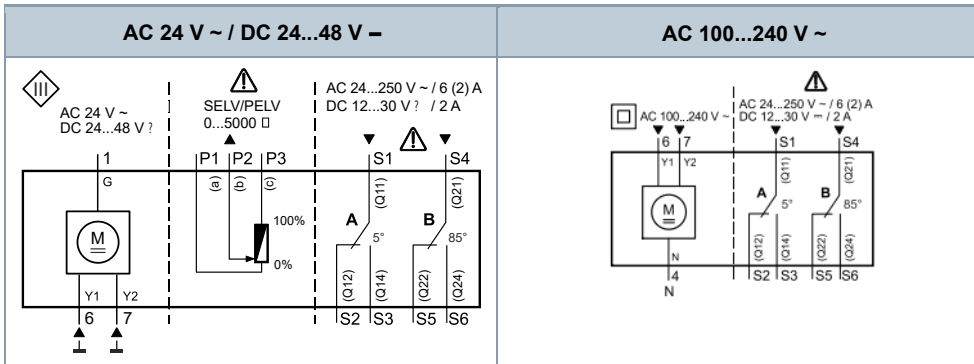
¹⁾ C-UL: Permissible only to DC 30 V –

²⁾ The documents can be downloaded at <http://siemens.com/bt/download>.

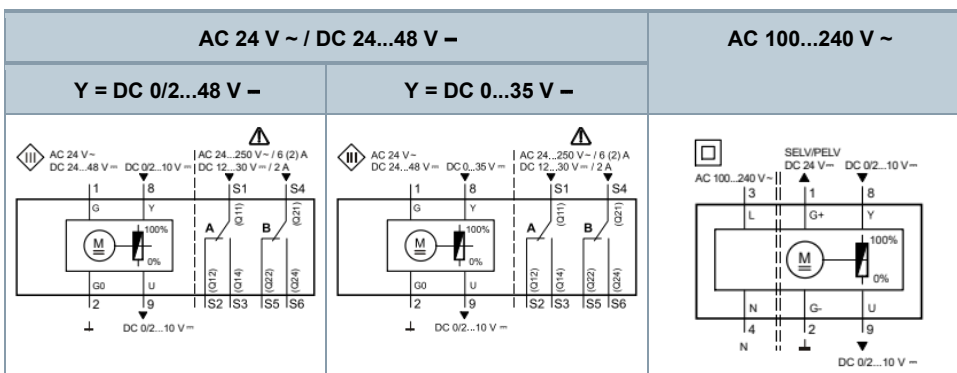
³⁾ This value only works with the form-fit insert.

Internal diagrams

GDB14..1E, GDB34..1E: Open / close, 3-position control

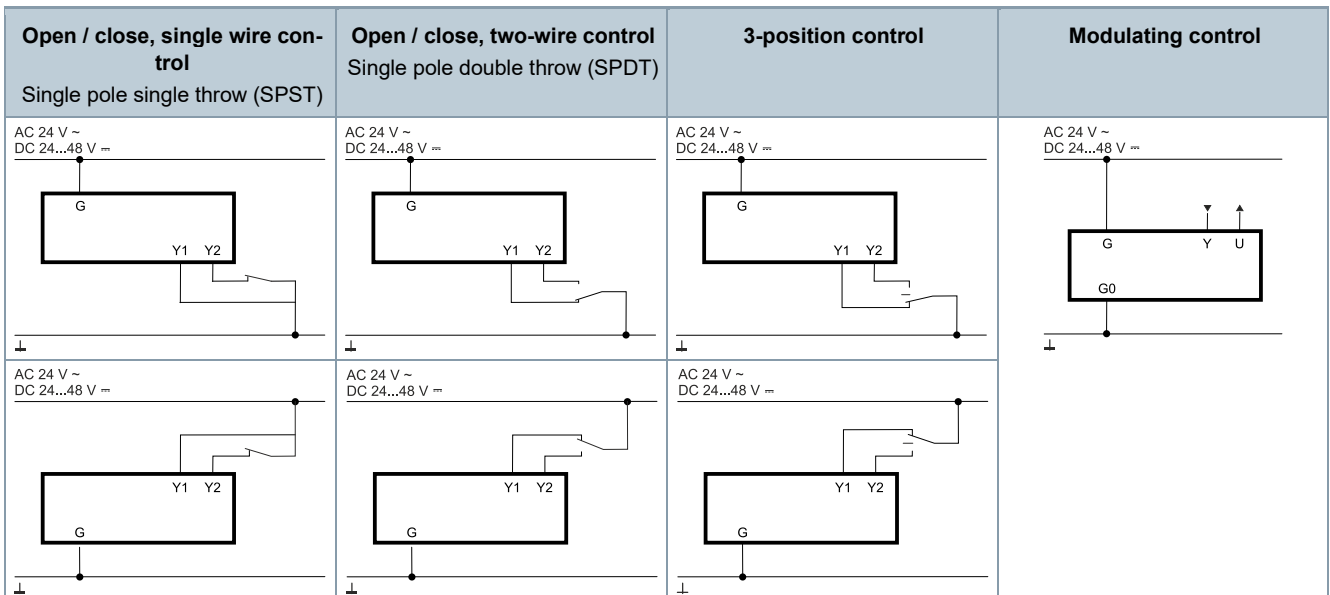


GDB16..1E, GDB36..1E: Modulating control



Connection diagrams

Control on GDB1..1E (AC 24 V ~ / DC 24...48 V -)



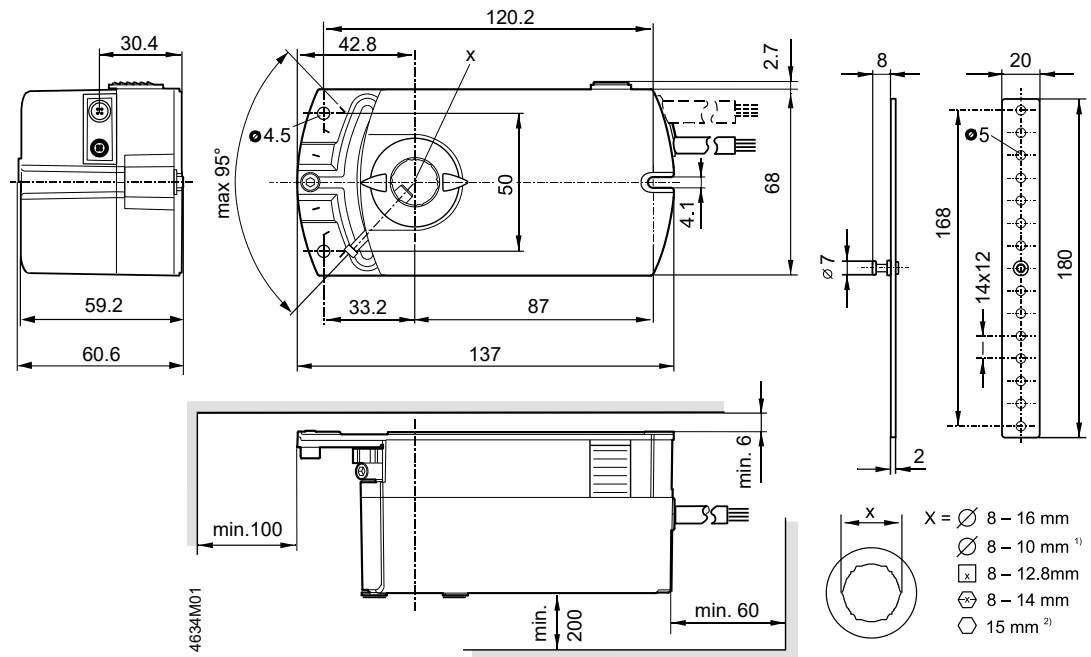
Control on GDB3..1E (AC 100...240 V ~)



Cable designations

Connecting thread	Code	No.	Color	Abbreviation	Meaning
Actuators AC 24 V ~ DC 24...48 V =	G	1	red	RD	System potential AC 24 V ~ / DC 24...48 V =
	G0	2	Black	BK	System neutral
	Y1	6	violet	VT	Positioning signal AC/DC 0 V "clockwise" GDB14..1E)
	Y2	7	orange	OG	Positioning signal AC/DC 0 V "counterclockwise" GDB14..1E)
	Y	8	Gray	GY	Signal input (GDB16..1E)
	U	9	pink	PK	Signal output (GDB16..1E)
Actuators AC 100...240 V ~	L	3	brown	BR	Phase, AC 100...240 V ~
	N	4	light blue	BU	Neutral conductor
	Y1	6	Black	BK	Positioning signal AC 100...240 V ~ "clockwise" GDB34..1E)
	Y2	7	white	WH	Positioning signal AC 100...240 V ~ "counterclockwise" GDB34..1E)
	G+	1	red	RD	System potential DC 24 V = (auxiliary power) (GDB36..1E)
	G-	2	Black	BK	System neutral (auxiliary power) (GDB36..1E)
	Y	8	Gray	GY	Signal input (GDB36..1E)
	U	9	pink	PK	Signal output (GDB36..1E)
Feedback potentiometer	a	P1	white/red	WH RD	Potentiometer 0...100 % (P1-P2)
	b	P2	white/blue	WH BU	Potentiometer pick-off
	c	P3	white/pink	WH PK	Potentiometer 100...0 % (P3-P2)
Auxiliary switch	Q11	S1	gray/red	GY RD	Switch A input
	Q12	S2	gray/blue	GY BU	Switch A Normally closed contact
	Q14	S3	gray/pink	GY PK	Switch A Normally open contact
	Q21	S4	black/red	BK RD	Switch B input
	Q22	S5	black/blue	BK BU	Switch B Normally closed contact
	Q24	S6	black/pink	BK PK	Switch B Normally open contact

Dimensions



1) With centering element

2) The value only works with the form fit function

Dimensions in mm

Revision numbers

Type	Valid from rev. no.	Type	Valid from rev. no.
GDB141.1E S55499-D184	..B	GDB164.1E S55499-D268	..B
GDB142.1E S55499-D185	..B	GDB166.1E S55499-D269	..B
GDB146.1E S55499-D186	..B	GDB341.1E S55499-D187	..B
GDB161.1E S55499-D266	..B	GDB346.1E S55499-D188	..B
GDB163.1E S55499-D267	..B	GDB361.1E S55499-D189	..B

Issued by
Siemens Switzerland Ltd
Smart Infrastructure
Global Headquarters
Theilerstrasse 1a
CH-6300 Zug
+41 58 724 2424
www.siemens.com/buildingtechnologies

© Siemens 2016 - 2025
Technical specifications and availability subject to change without notice.

Document ID A6V10636149_en--_f
Edition 2025-12-18