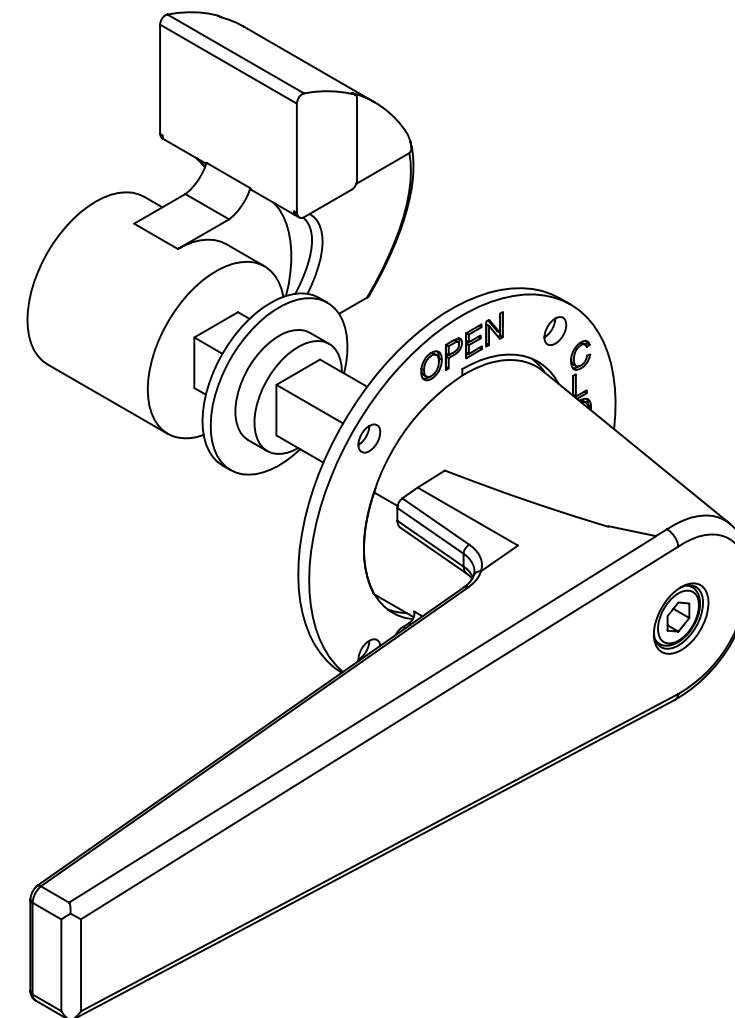
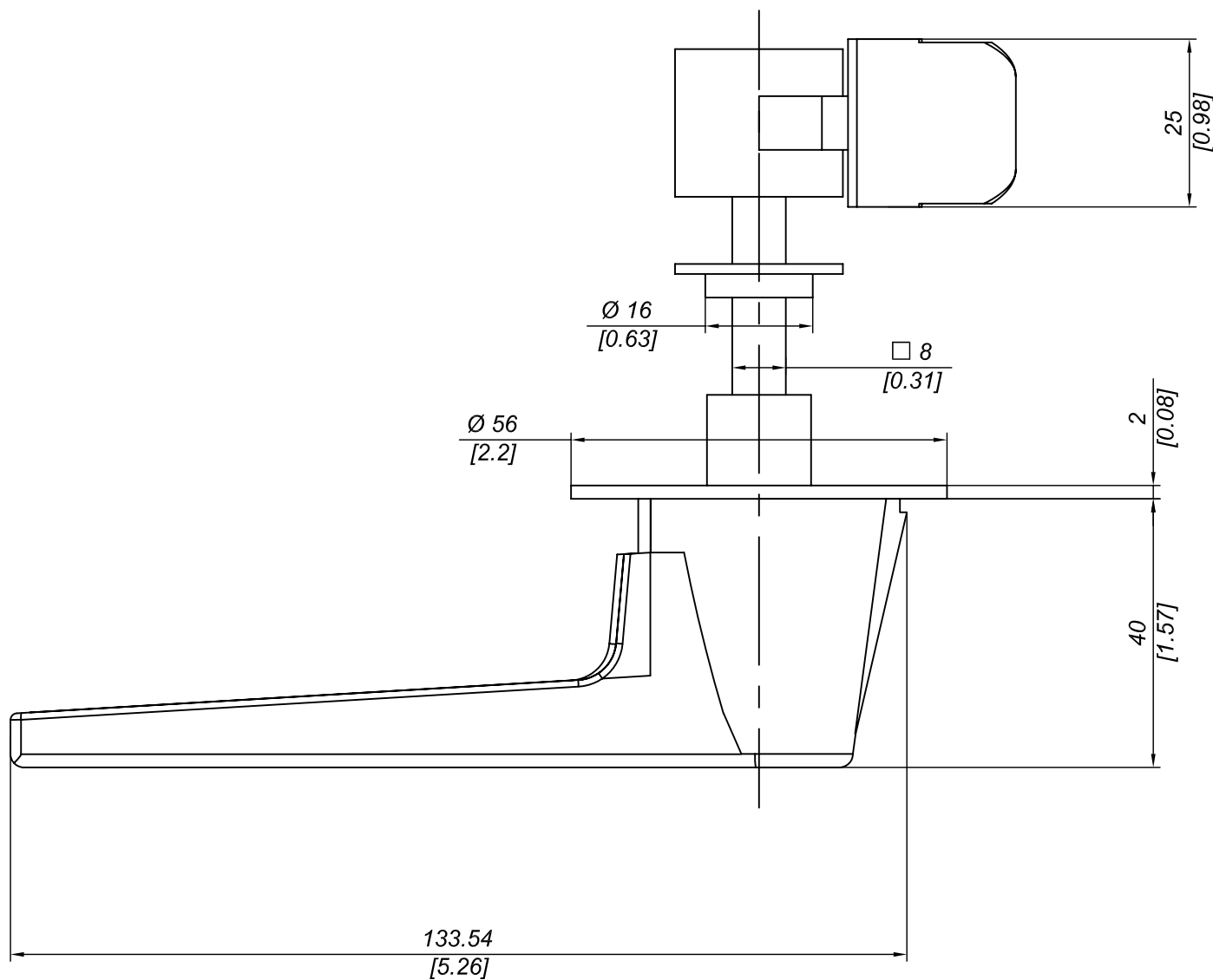
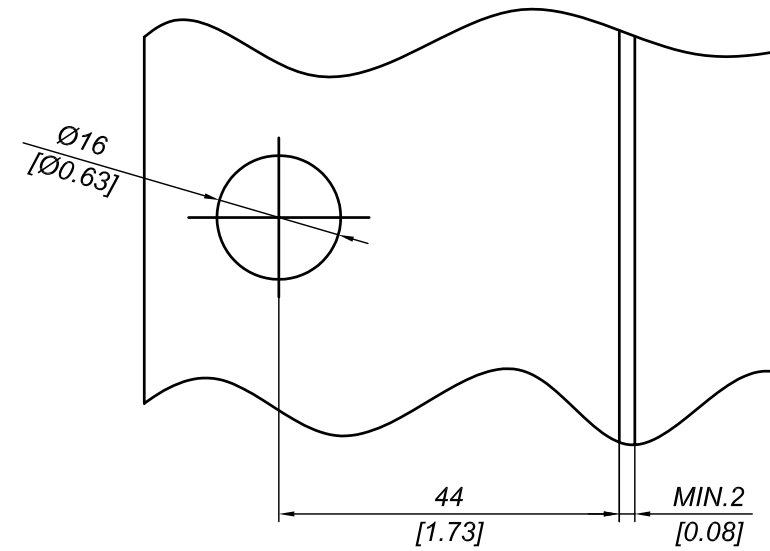
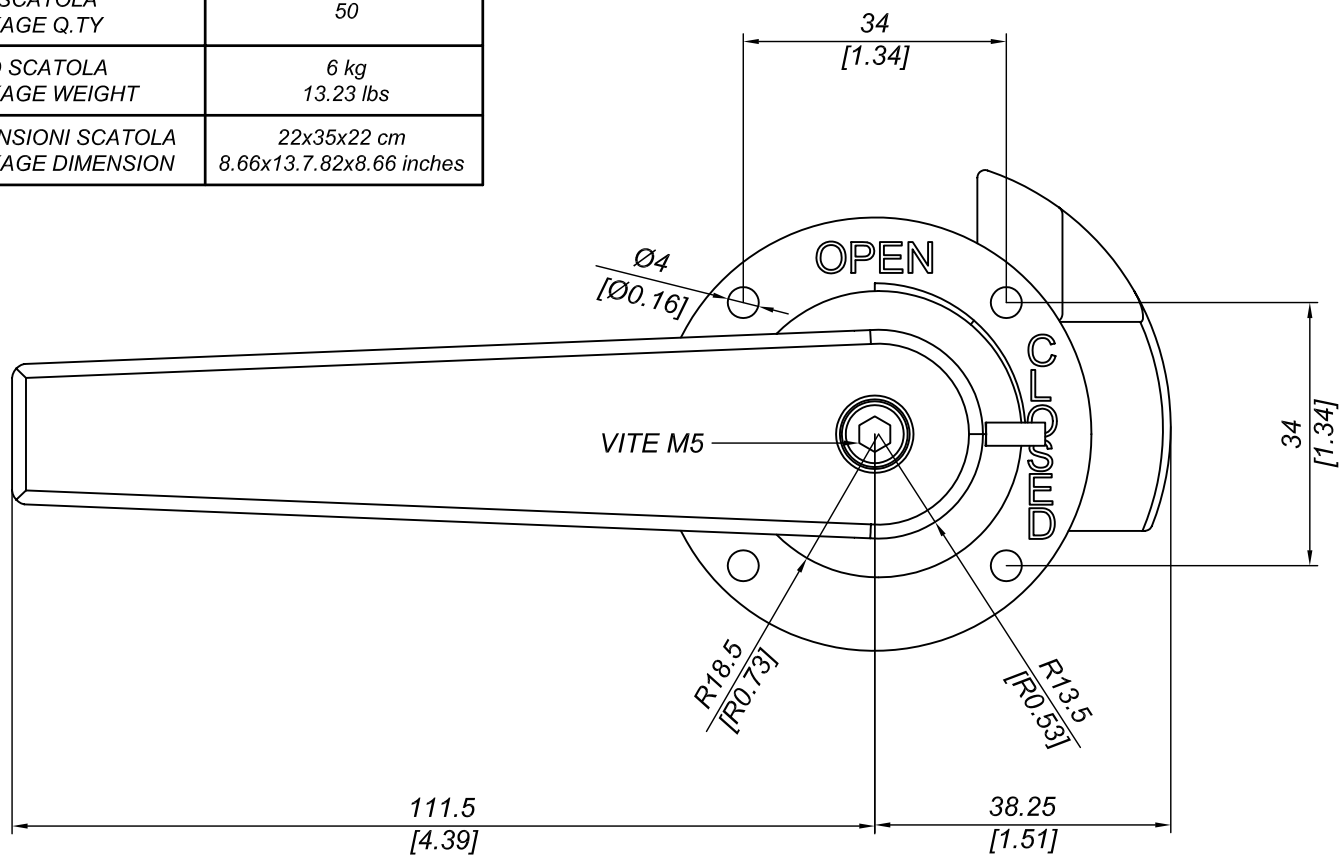


| | |
|---|---------------------------------------|
| Q.TÀ SCATOLA PACKAGE Q.TY | 50 |
| PESO SCATOLA PACKAGE WEIGHT | 6 kg 13.23 lbs |
| DIMENSIONI SCATOLA PACKAGE DIMENSION | 22x35x22 cm 8.66x13.78x8.66 inches |



| | | | | | | | |
|---|----------------|--|----|----------------|-------|-----------------|------------|
| DESCRIZIONE MANIGLIA NYLON PER PANNELLI SPESSORI 20/25/45/50/60 | | | | | | | |
| DESCRIPTION NYLON HANDLE TO PANEL WIDTH 20/25/45/50/60 | | | | | | | |
| MATERIALE MATERIAL | PA6+30%G.F. | TRATTAMENTO TREATMENT | -- | SCALA SCALE | 1:1 | DATA DATE | 2009/07/18 |
| PESO TEORICO THEORETICAL WEIGHT | -- kg -- lb | NORMA TOLLERANZA STANDARD TOLERANCE | -- | CODICE CODE | DN200 | FORMATO SIZE | A3 |

Questo disegno è di proprietà riservata alla ditta PRO-LAM ALLUMINIO s.r.l. A termini di legge è assolutamente vietato riprodurre o comunicare a terzi il contenuto del presente disegno. This drawing is a property of PRO-LAM ALLUMINIO s.r.l. This drawing shall not be reproduced or released to others except as otherwise authorized by PRO-LAM ALLUMINIO s.r.l.